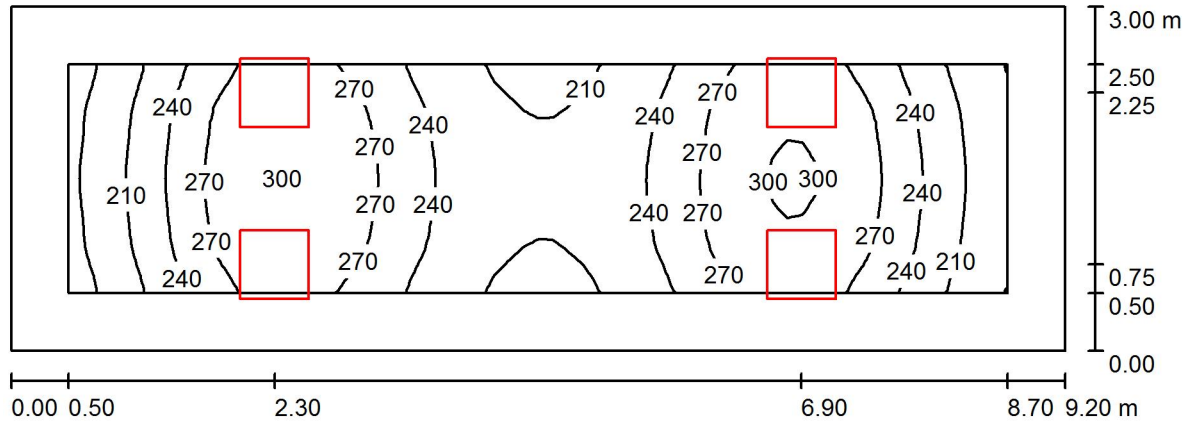


Operator
Telephone
Fax
e-Mail

1.09 / Summary



Height of Room: 3.000 m, Mounting Height: 3.000 m, Maintenance factor: 0.90

Values in Lux, Scale 1:66

Surface	ρ [%]	E_{av} [lx]	E_{min} [lx]	E_{max} [lx]	$u0$
Workplane	/	247	171	305	0.692
Floor	20	221	126	293	0.573
Ceiling	70	67	44	108	0.658
Walls (4)	50	150	52	591	/

Workplane:

Height: 0.100 m
Grid: 64 x 16 Points
Boundary Zone: 0.500 m

Illuminance Quotient (according to LG7): Walls / Working Plane: 0.607, Ceiling / Working Plane: 0.271.
Proportion of points with less than 400 lx (for IEQ-7): 100.00%.

Luminaire Parts List

No.	Pieces	Designation (Correction Factor)	Φ (Luminaire) [lm]	Φ (Lamps) [lm]	P [W]
1	4	OCTA-LIGHT PLC OCTL-OLS-30-RNWR (1.000)	3040	3100	28.0
Total:			12160	12400	112.0

Specific connected load: $4.06 \text{ W/m}^2 = 1.65 \text{ W/m}^2/100 \text{ lx}$ (Ground area: 27.60 m^2)